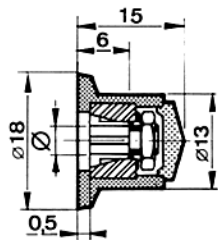


Bouton bas jupe simple standard

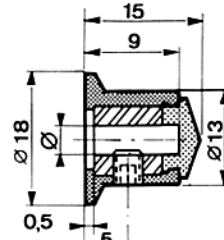
STÖCKLI

Fixation par pince

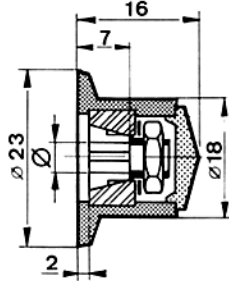
Fixation par vis



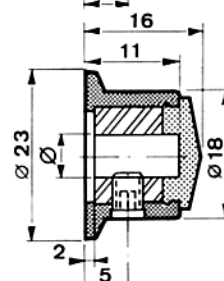
Ø	REFERENCE
3	303-03-30
4	303-03-40
5	303-03-50
6	303-03-60
1/8"	303-03-10
1/4"	303-03-20



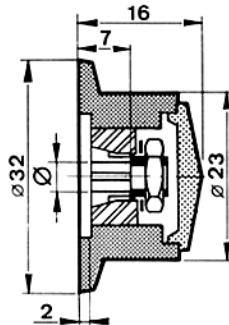
Ø	REFERENCE
3	103-03-30
4	103-03-40
6	103-03-60
1/8"	103-03-10
1/4"	103-03-20



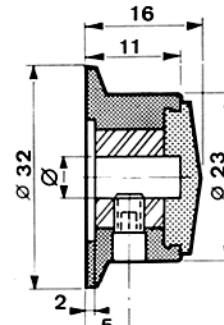
Ø	REFERENCE
3	303-04-30
4	303-04-40
5	303-04-50
6	303-04-60
1/8"	303-04-10
1/4"	303-04-20



Ø	REFERENCE
3	103-04-30
4	103-04-40
6	103-04-60
1/8"	103-04-10
1/4"	103-04-20



Ø	REFERENCE
3	303-05-30
4	303-05-40
5	303-05-50
6	303-05-60
1/8"	303-05-10
1/4"	303-05-20

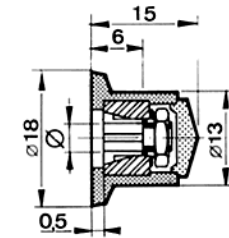


Ø	REFERENCE
4	103-05-40
6	103-05-60
1/4"	103-05-20

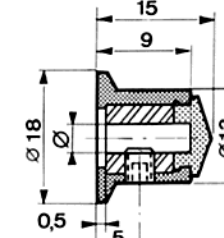
Bouton bas jupe à point standard

Fixation par pince

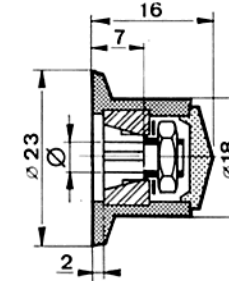
Fixation par vis



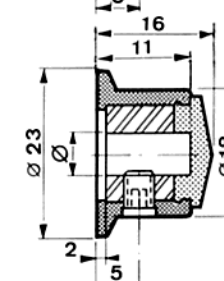
Ø	REFERENCE
3	303-13-30
4	303-13-40
5	303-13-50
6	303-13-60
1/8"	303-13-10
1/4"	303-13-20



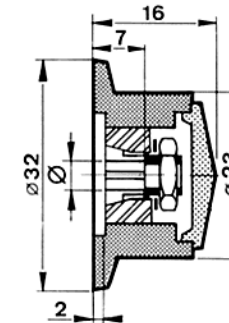
Ø	REFERENCE
3	103-13-30
4	103-13-40
6	103-13-60
1/8"	103-13-10
1/4"	103-13-20



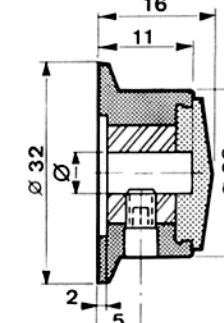
Ø	REFERENCE
3	303-14-30
4	303-14-40
5	303-14-50
6	303-14-60
1/8"	303-14-10
1/4"	303-14-20



Ø	REFERENCE
3	103-14-30
4	103-14-40
6	103-14-60
1/8"	103-14-10
1/4"	103-14-20



Ø	REFERENCE
3	303-15-30
4	303-15-40
5	303-15-50
6	303-15-60
1/8"	303-15-10
1/4"	303-15-20



Ø	REFERENCE
4	103-15-40
6	103-15-60
1/4"	103-15-20