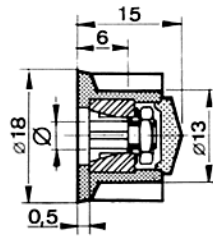


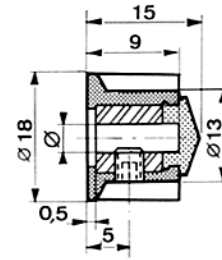
# Bouton bas jupe papillon standard

# STÖCKLI



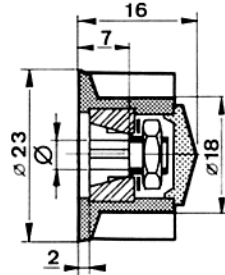
Fixation par pince

Ø	REFERENCE
3	303-53-30
4	303-53-40
5	303-53-50
6	303-53-60
1/8"	303-53-10
1/4"	303-53-20

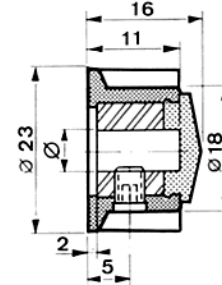


Fixation par vis

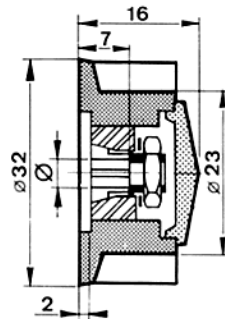
Ø	REFERENCE
3	103-53-30
4	103-53-40
6	103-53-60
1/8"	103-53-10
1/4"	103-53-20



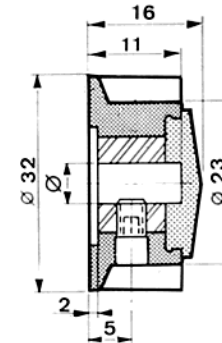
Ø	REFERENCE
3	303-54-30
4	303-54-40
5	303-54-50
6	303-54-60
1/8"	303-54-10
1/4"	303-54-20



Ø	REFERENCE
3	103-54-30
4	103-54-40
6	103-54-60
1/8"	103-54-10
1/4"	103-54-20



Ø	REFERENCE
3	303-55-30
4	303-55-40
5	303-55-50
6	303-55-60
1/8"	303-55-10
1/4"	303-55-20



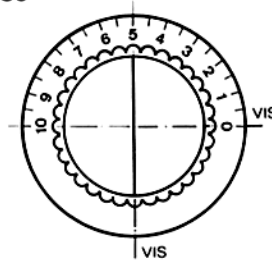
Ø	REFERENCE
4	103-55-40
6	103-55-60
1/4"	103-55-20

# Bouton bas jupe graduée standard

Voir les dessins cotés de la page précédente.



Arc 180°



Fixation par pince

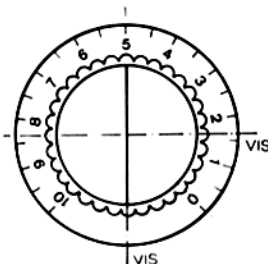
Ø	REFERENCE
3	309-65-30
4	309-65-40
5	309-65-50
6	309-65-60
1/8"	309-65-10
1/4"	309-65-20

Fixation par vis

Ø	REFERENCE
4	109-65-40
6	109-65-60

Bouton : corps Ø 23 jupe Ø 32

Arc 270°



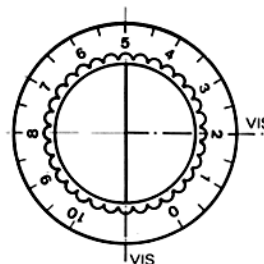
Fixation par pince

Ø	REFERENCE
3	309-75-30
4	309-75-40
5	309-75-50
6	309-75-60
1/8"	309-75-10
1/4"	309-75-20

Fixation par vis

Ø	REFERENCE
4	109-75-40
6	109-75-60
1/4"	109-75-20

Arc 300°



Fixation par pince

Ø	REFERENCE
3	309-85-30
4	309-85-40
5	309-85-50
6	309-85-60
1/8"	309-85-10
1/4"	309-85-20

Fixation par vis

Ø	REFERENCE
4	109-85-40
6	109-85-60
1/4"	109-85-20