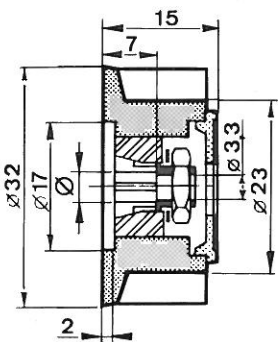
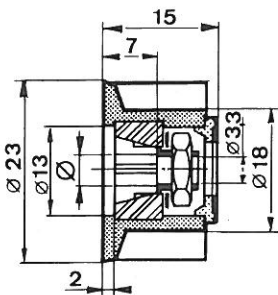
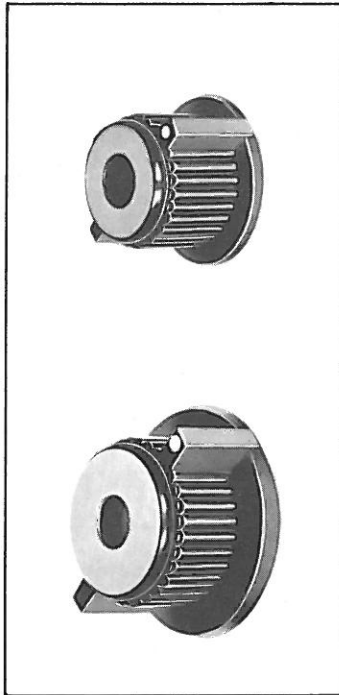
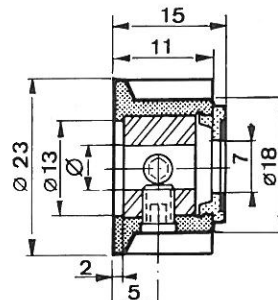


Modèle bas-jupe-papillon

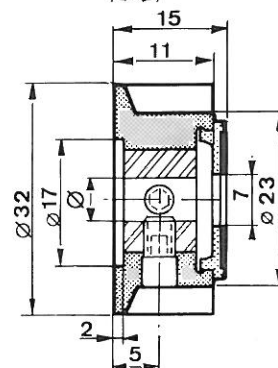


Fixation par pince

Ø	REFERENCE
	avec "CAPS"
6	353-54-69
1/4"	353-54-29
	sans "CAPS"
6	343-54-60
1/4"	343-54-20



Ø	REFERENCE
	avec "CAPS"
6	353-55-69
1/4"	353-55-29
	sans "CAPS"
6	343-55-60
1/4"	343-55-20

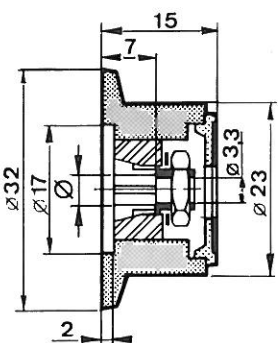
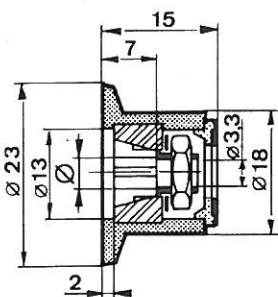
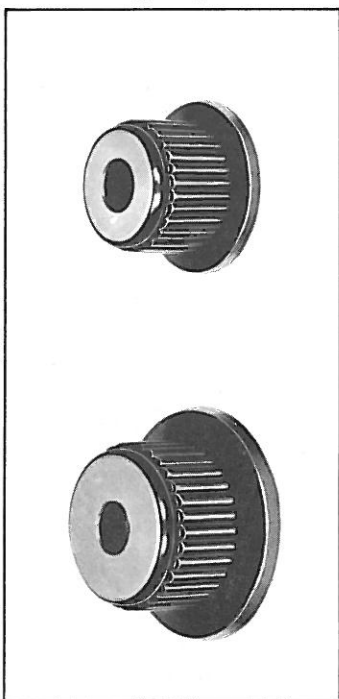


Fixation par vis

Ø	REFERENCE
	avec "CAPS"
6	153-54-69
1/4"	153-54-29
	sans "CAPS"
6	143-54-60
1/4"	143-54-20

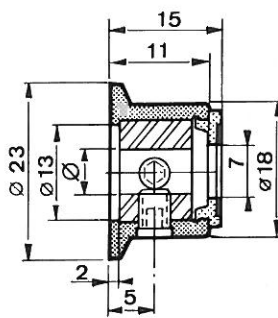
Ø	REFERENCE
	avec "CAPS"
6	153-55-69
10	153-55-09
1/4"	153-55-29
3/8"	153-55-99
	sans "CAPS"
6	143-55-60
10	143-55-00
1/4"	143-55-20
3/8"	143-55-90

Modèle bas-jupe-simple

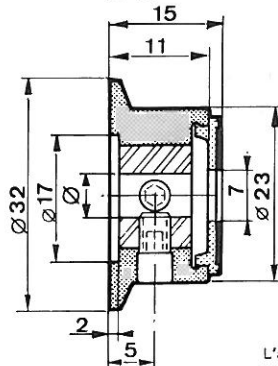


Fixation par pince

Ø	REFERENCE
	avec "CAPS"
6	353-04-69
1/4"	353-04-29
	sans "CAPS"
6	343-04-60
1/4"	343-04-20



Ø	REFERENCE
	avec "CAPS"
6	353-05-69
1/4"	353-05-29
	sans "CAPS"
6	343-05-60
1/4"	343-05-20



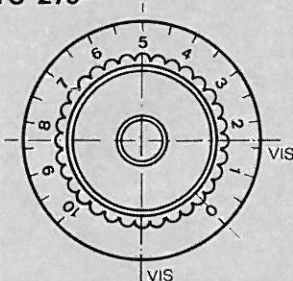
Fixation par vis

Ø	REFERENCE
	avec "CAPS"
6	153-04-69
1/4"	153-04-29
	sans "CAPS"
6	143-04-60
1/4"	143-04-20

Ø	REFERENCE
	avec "CAPS"
6	153-05-69
10	153-05-09
1/4"	153-05-29
3/8"	153-05-99
	sans "CAPS"
6	143-05-60
10	143-05-00
1/4"	143-05-20
3/8"	143-05-90

L'alésage 8 peut être obtenu avec une bague de réduction 10/8

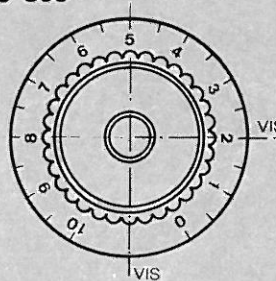
Arc 270°



Ø	REFERENCE
	avec "CAPS"
6	359-75-69
1/4"	359-75-29
	sans "CAPS"
6	349-75-60
1/4"	349-75-20

Ø	REFERENCE
	avec "CAPS"
6	159-75-69
10	159-75-09
1/4"	159-75-29
3/8"	159-75-99
	sans "CAPS"
6	149-65-60
10	149-65-00
1/4"	149-65-20
3/8"	149-65-90

Arc 300°



Ø	REFERENCE
	avec "CAPS"
6	359-85-69
1/4"	359-85-29
	sans "CAPS"
6	349-85-60
1/4"	349-85-20

Ø	REFERENCE
	avec "CAPS"
6	159-85-69
10	159-85-09
1/4"	159-85-29
3/8"	159-85-99
	sans "CAPS"
6	149-85-60
10	149-85-00
1/4"	149-85-20
3/8"	149-85-90