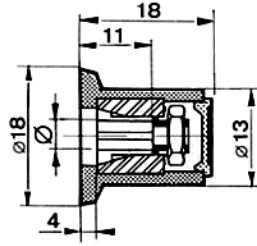


Bouton Haut jupe à point

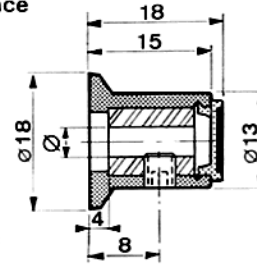
STÖCKLI

Fixation par pince

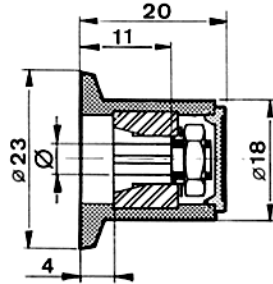
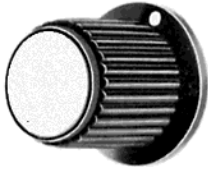
Fixation par vis



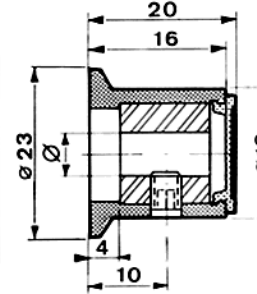
Ø	REFERENCE
3	312-13-39
4	312-13-49
5	312-13-59
6	312-13-69
1/8"	312-13-19
1/4"	312-13-29



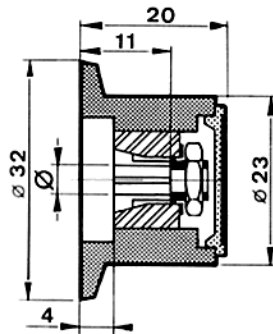
Ø	REFERENCE
3	112-13-39
4	112-13-49
6	112-13-69
1/8"	112-13-19
1/4"	112-13-29



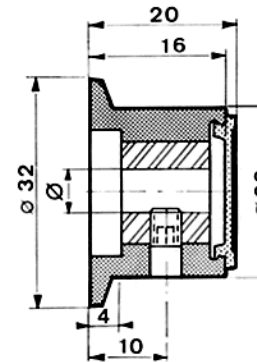
Ø	REFERENCE
3	312-14-39
4	312-14-49
5	312-14-59
6	312-14-69
1/8"	312-14-19
1/4"	312-14-29



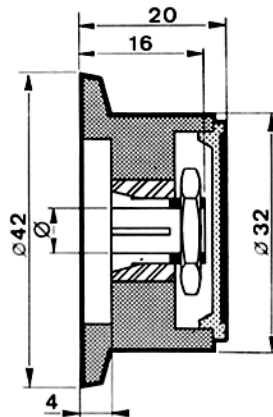
Ø	REFERENCE
3	112-14-39
4	112-14-49
6	112-14-69
1/8"	112-14-19
1/4"	112-14-29



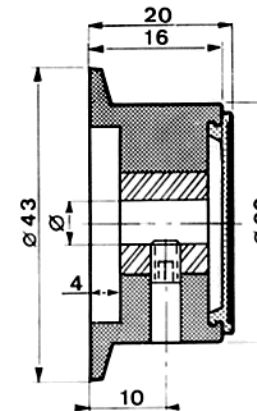
Ø	REFERENCE
3	312-15-39
4	312-15-49
5	312-15-59
6	312-15-69
1/8"	312-15-19
1/4"	312-15-29



Ø	REFERENCE
4	112-15-49
6	112-15-69
1/4"	112-15-29

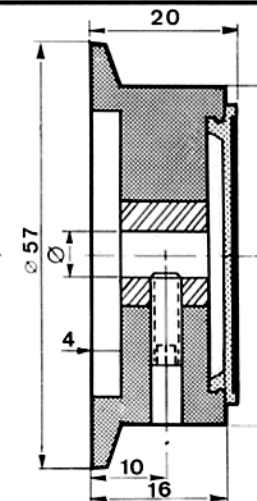
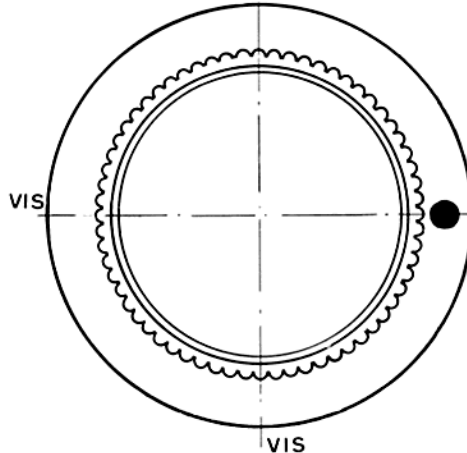


Ø	REFERENCE
4	312-16-49
5	312-16-59
6	312-16-69
1/4"	312-16-29



Ø	REFERENCE
4	112-16-49
6	112-16-69
8	112-16-89
10	112-16-09
1/4"	112-16-29

A vis seulement



Ø	REFERENCE
4	112-17-49
6	112-17-69
8	112-17-89
10	112-17-09
1/4"	112-17-29